



Notice of archaeological excavation works, Edgcote

February 2021 | www.hs2.org.uk

High Speed Two (HS2) is the new high speed railway for Britain. We are continually reviewing the works on our construction sites in line with Government and Public Health England (PHE) advice on dealing with COVID-19. The Government's current strategy makes it clear that construction activity can continue as long as it complies with this guidance.

Please be assured that only sites that can operate within the guidelines are operational. All sites will remain under constant review. We have postponed all face-to-face engagement events and meetings and have put in place a number of channels to communicate with communities, such as letters and phone calls, as well as updates and alerts from each of the local community websites. You can sign up for regular updates in your local area at www.hs2innorthants.co.uk

What will be doing?

We have recently completed our archaeological survey and trial trench evaluation work to identify areas of possible archaeological interest. We will now carry out further works where we have found areas of archaeological interest. This work involves topsoil excavation, mitigating and recording artefacts at Edgcote battlefield and Blackgrounds Farm.

The investigations will be undertaken by teams of archaeologists using mechanical excavators and hand tools. There will be archaeologists, plant operators and management teams on site.

Once the work is completed, the excavated areas will be reinstated.

Edgcote Battlefield site

There are two mitigation areas which will be contained within the area of Edgcote, south of the River Cherwell. We shall access these sites off Wardington Road and Welsh Road and we will be placing warning signage to alert road users to turning vehicles. Please see the map enclosed for further detail.

If you have a question about HS2 or our works, please contact our HS2 Helpdesk team on 08081 434 434 or email hs2enquiries@hs2.org.uk

Duration of works

Work starts mid-February 2021 and continue until August 2021.

Normal working hours:

Monday to Friday 8am – 6pm and Saturday 8am to 1pm (if required)

Our contractors may also be on site for one hour's start-up and shutdown outside of these times.

What to expect

Some additional traffic on local roads.

Site operated with 24hr security and temporary flood lighting.

Site storage and welfare compound.

What we will do

Manage any impacts, such as traffic and noise with the aim of reducing or removing them.

Notice of archaeological excavation works, Edgcote



www.hs2.org.uk

What will be doing? (continued)

The temporary site compound will contain track matting, security, temporary lighting, fencing and welfare units.

There will be up to 15 archaeologists working on each site, but this will vary over the works programme.

The work is scheduled to start 15 February 2021 with the establishment of a small temporary compound with the second site off Wardington Road scheduled to start 1 March 2021. Works are expected to continue until August 2021.

Blackgrounds Farm

The mitigation area will be contained within an area north of Blackgrounds Farm. We shall access this site directly off Culworth Road and we will be placing warning signage to alert road users to turning vehicles. Please see the map enclosed for further detail.

The temporary site compound will contain track matting, security, temporary lighting, fencing and welfare units.

At the sites busiest periods there will be 30 - 40 archaeologists working on site, but this will vary over the works programme.

The work is scheduled to start in mid-February with the establishment of the compound and is expected to continue until August 2021.

How may this affect you?

We will be working hard to ensure any impacts on residents are kept to a minimum during these and all our future works. You may notice a little extra traffic on the road immediately around the sites with workers and delivery vehicles moving to and from the site. There may be some noise from the machinery. Our normal working hours are between 8:00am and 6:00pm Monday – Friday and 8:00am – 1:00pm Saturdays. The site will be open an hour either side of these times for the workforce to start up and shut down.

You may notice some lighting from our site compounds at night. This is required to ensure the security of our site. The light levels will be monitored, and the impact of this light will be mitigated where possible.

For this stage of works we will not be closing any Public Rights of Way.

For further updates about these works and HS2 in general, please visit www.hs2innorthants.co.uk where you can sign up to news alerts

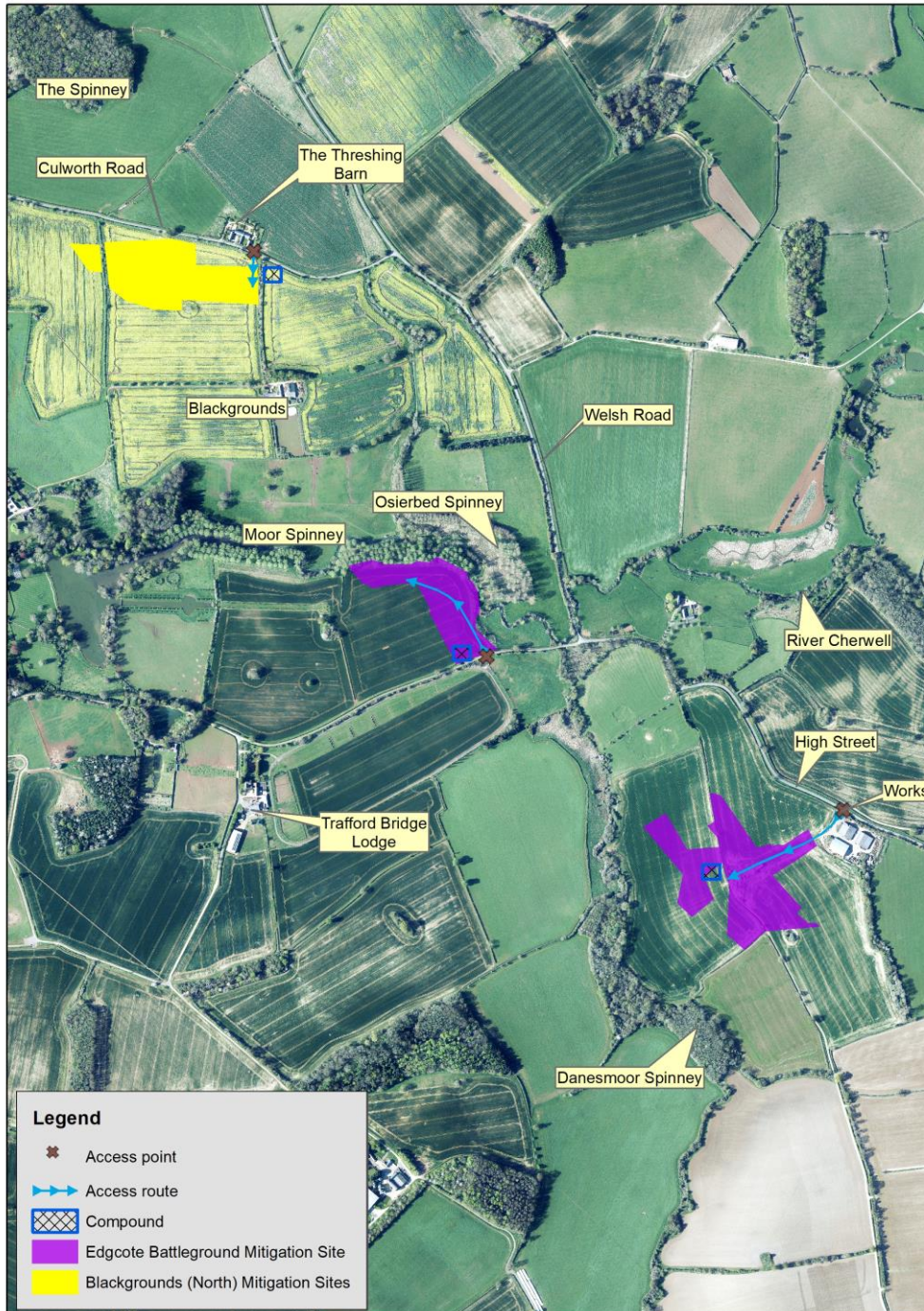
Notice of archaeological excavation works, Edgcote

Notification



www.hs2.org.uk

Location of Blackgrounds and Edgcote excavation sites



Contact our HS2 Helpdesk team on **08081 434 434**

Keeping you informed

We are committed to keeping you informed about work on HS2. This includes ensuring you know what to expect and when to expect it, as well as how we can help.

Residents' Charter and Commissioner

The Residents' Charter is our promise to communicate as clearly as we possibly can with people who live along or near the HS2 route. www.gov.uk/government/publications/hs2-residents-charter

We also have an independent Residents' Commissioner whose job is to make sure we keep to the promises we make in the Charter and to keep it under constant review. Find reports at: www.gov.uk/government/collections/hs2-ltd-residents-commissioner

You can contact the Commissioner at: residentscommissioner@hs2.org.uk

Construction Commissioner

The Construction Commissioner's role is to mediate and monitor the way in which HS2 Ltd manages and responds to construction complaints. You can contact the Construction Commissioner by emailing: complaints@hs2-cc.org.uk

Property and compensation

You can find out all about HS2 and properties along the line of route by visiting: www.gov.uk/government/collections/hs2-property
Find out if you're eligible for compensation at: www.gov.uk/claim-compensation-if-affected-by-hs2

Holding us to account

If you are unhappy for any reason you can make a complaint by contacting our HS2 Helpdesk team. For more details on our complaints process, please visit our website: www.hs2.org.uk/how-to-complain

Contact Us

Contact our HS2 Helpdesk team all day, every day of the year on:

 Freephone **08081 434 434**

 Minicom **08081 456 472**

 Email **hs2enquiries@hs2.org.uk**

Write to:

FREEPOST

HS2 Community Engagement

Website **www.hs2.org.uk**

To keep up to date with what is happening in your local area, visit: **www.hs2inyourarea.co.uk**

Please contact us if you'd like a free copy of this document in large print, Braille, audio or easy read. You can also contact us for help and information in a different language.

HS2 Ltd is committed to protecting personal information. If you wish to know more about how we use your personal information please see our Privacy Notice <https://www.gov.uk/government/publications/high-speed-two-ltd-privacy-notice>

Reference number: FUS_AWN_0171 HS2-EW-Fusion-Ph1-Ar-Ce-C3-Ex-Mat-50-02/05/2021

High Speed Two (HS2) Limited, registered in England and Wales.
Registered office: Two Snowhill, Snow Hill Queensway, Birmingham B4 6GA.
Company registration number: 06791686. VAT registration number: 181 4312 30.